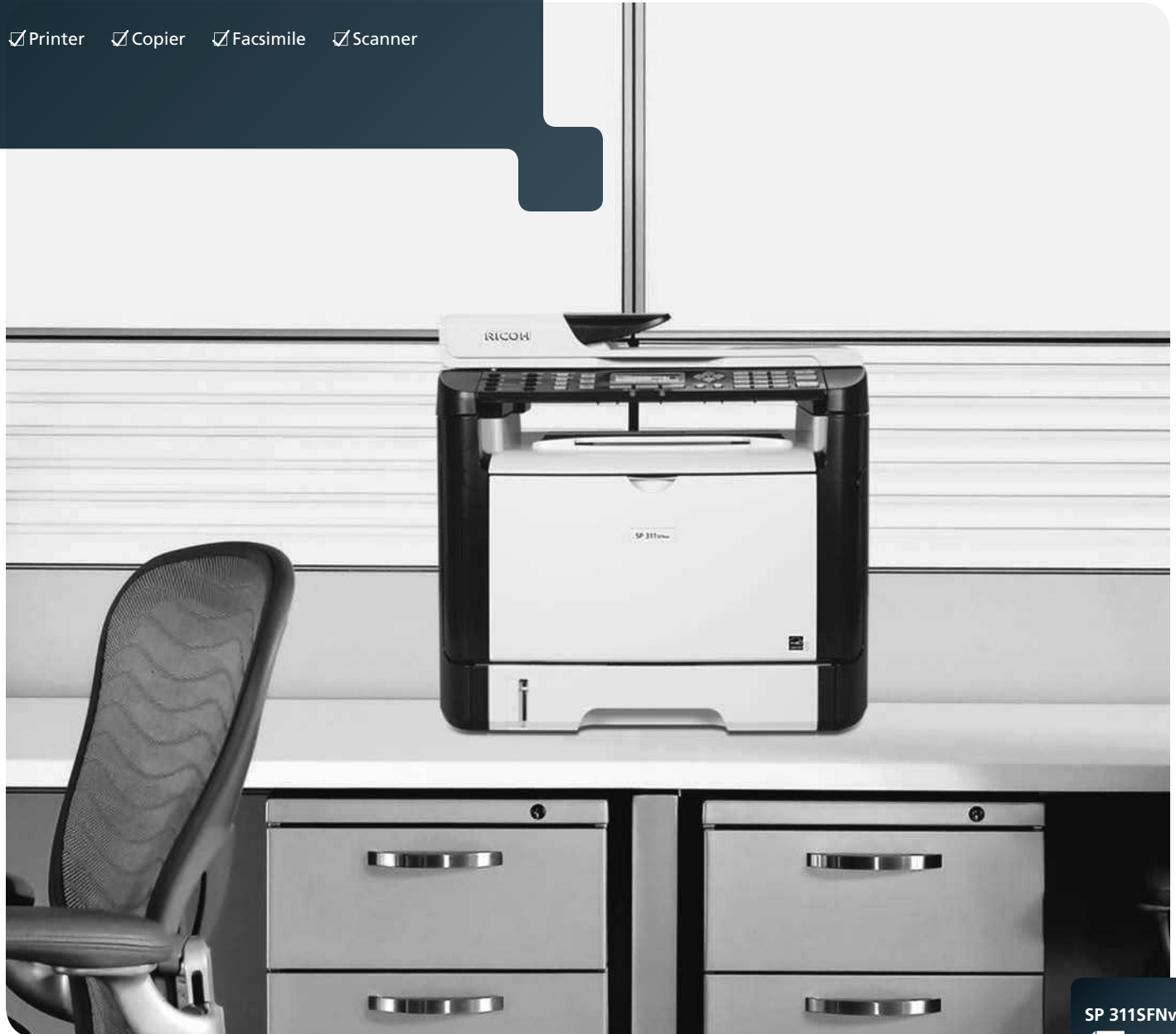


B&W Multifunction Laser Printer

# RICOH SP 311SFNw

✓ Printer   ✓ Copier   ✓ Facsimile   ✓ Scanner



**RICOH**  
imagine. change.

SP 311SFNw

30  
ppm monochrome



## The versatility of multifunctionality with the convenience of wireless

Managing communications in your office just got easier. The RICOH® SP 311SFNw lets you place high quality black-and-white laser printing, copying, and faxing plus full-color scanning wherever you need it. Simple to use and easy to maintain, this 30-page-per-minute multifunction system offers a robust feature set including standard duplex printing and wireless networking to handle all of your everyday business tasks.

### Multifunctionality where you want it

Put the compact Ricoh SP 311SFNw to work right next to you to keep 30-ppm laser printing/copying/scanning/faxing power within easy reach. Or place this versatile office tool wherever it is most convenient for everyone in the office to share. It's your choice. In addition to hardwired USB 2.0 and Ethernet network interfaces, the SP 311SFNw offers built-in IEEE 802.11 b/g/n Wireless LAN connectivity with authentication and encryption. There are no cables, no complex setup procedures, no physical limitations on where to install trouble-free, secure WiFi-enabled laser printing, scanning, and PC faxing\* (and walk-up copying/scanning/faxing too).

\*Super G3 Faxing requires a hardwired telephone connection.

### Business-class performance

The SP 311SFNw is a true business solution ready to tackle real challenges and able to process multiple jobs simultaneously. Copy while faxing, print while scanning, fax while copying, and scan while printing. Now everyone in the office can keep pace with business. The 35-Sheet Automatic Document Feeder quickly processes multi-page originals up to 8.5" x 14" for scanning, copying, and faxing. The versatile 250-Sheet Front-Loading Paper Tray and 50-Sheet Bypass both accept media from postcard to legal size and up to 90 lb. Index in weight. The 50-Sheet Exit Tray collates sets without occupying more space. The control panel has a 4-line LCD screen with corresponding hard keys plus 8 Quick Dials for fast and easy job programming. The Ricoh SP 311SFNw has it all, and it's all standard.

### Easy to maintain and affordable to own

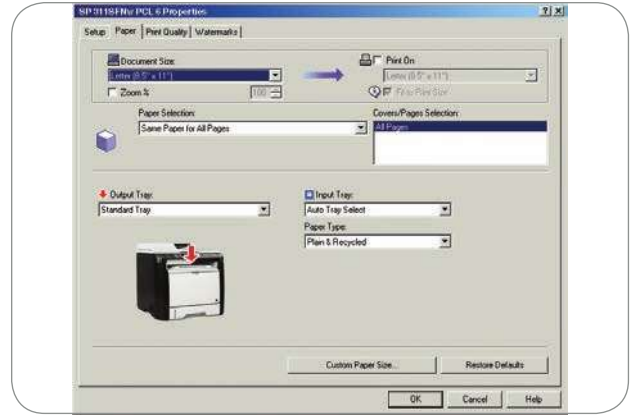
The cost-cutting SP 311SFNw uses Ricoh's proven All-In-One print cartridge technology for simplified maintenance and reduced per-page costs. Reliable and durable, the AIO cartridge is the only supply you'll ever need – it contains everything that can run out – and can be changed by anyone in seconds. Stretch supplies and lower page costs even further with Toner Save mode. Take advantage of full-color Scan-to-Email/Folder for cost-free information distribution and bring business communication expenses to an all-time low.



# Well-rounded multifunctionality

## Print like a pro

The Ricoh SP 3115FNw includes 80 resident font packages for fast, creative printing in any style. Its powerful controller quickly processes files at up to 1200 x 600 dpi resolution for sharp text and graphics on every page at speeds up to 30-ppm. The intuitive PCL 6 printer driver makes it easy to program advanced features such as duplex printing, combining multiple pages onto a single sheet, adding watermarks to pages and adding front covers to sets.



## Consistent copying

The 35-sheet ADF quickly feeds multi-page documents up to 8.5" x 14". Use the letter-size platen glass to copy single page or wallet size originals. Either way, the Ricoh SP 3115FNw uses Scan Once/Print Many technology to reproduce up to 99 sets from the initial scan for consistent image quality from first page to last. ID Card Copy expedites the copying of two-sided checks, driver licenses, and insurance cards in a single operation. Easy access to image type and zoom modes gives users total control over document quality.



## High resolution scanning, sending and faxing

Bring a wide range of image capture and distribution capabilities to your office. Support for full-color and grayscale scanning allows for easy TWAIN and WIA image capture. Save files in TIFF, PDF, or JPEG format for further editing or to share files with network destinations through Scan-to-Email and Scan-to-Folder. Standard Super G3 Faxing makes it easy to send documents to people who may not be accessible via e-mail. Professional fax capabilities include a 200-entry Address Book, auto redialing, and PC faxing. Not in the office? One hundred pages of built-in fax memory and a telephone answering machine interface mean you'll never miss another fax or voice call.



# Ricoh SP 311SFNw

## SYSTEM SPECIFICATIONS

### General Specifications

Configuration	Desktop Monochrome Multifunction Printer with AIO Cartridge technology
Reading Element	Flatbed scanner with full-color CCD Contact Image Sensor (CIS)
Imaging Technology	Laser beam scanning with electrophotographic printing
Warm-Up Time	30 seconds or less
First Print Speed	8 seconds or less
Continuous Print Speed	30 pages per minute (Letter)
Operation Panel	4-line LCD + alphanumeric keypad
Platen Scanning	Supported, up to 8.5" x 11.7" (216 x 297 mm)
Document Feeding	Automatic Document Feeder (Standard)
Original Capacity	35 sheets
Original Size	5.5" x 5.5" to 8.5" x 14" (140 x 140 mm to 216 x 356 mm)
Original Weight	14 – 28 lb. Bond (52 – 105 g/m <sup>2</sup> )
Paper Capacity	250-Sheet Tray x 1 + 50-Sheet Bypass = 300 sheets
Auto Duplexing	Standard duplex printing (@ 50% productivity)
Output Capacity	50 sheets (face down)
Paper Sizes	Standard Tray: 5.5" x 8.5" to 8.5" x 14", A6 – B5 Custom Sizes: 3.94" x 5.82" to 8.5" x 14" (100 x 148 mm to 216 x 356 mm) Bypass Tray: 5.5" x 8.5" to 8.5" x 14", A6 – B5 Custom Sizes: 3.5" x 5.5" to 8.5" x 14" (90 x 140 mm to 216 x 356 mm) Duplexing: 8.5" x 11", 8.5" x 14", A4
Paper Weights	Standard Tray: 14 – 43 lb. Bond/90 lb. Index (52 – 162 g/m <sup>2</sup> ) Bypass Tray: 14 – 43 lb. Bond/90 lb. Index (52 – 162 g/m <sup>2</sup> ) Duplexing: 16 – 28 lb. Bond (60 – 105 g/m <sup>2</sup> )
Paper Types	Standard Tray: Thin, Thick, Plain, & Recycled papers Bypass: Thin, Thick, Plain, & Recycled papers, Labels, Envelopes
System Dimensions (WxDxH)	15.9" x 15.5" x 15.3" (405 x 392 x 390 mm)
Weight	38.6 lb. (17.5 kg) (including Starter AIO)
Power Requirements	120V, 60Hz
Power Consumption	Maximum: 800 W, Energy Saver: 5 W

### Printer/Controller Specifications

CPU	360 MHz
Memory	128 MB RAM standard/maximum
Printer Languages/Drivers	PCL 6 PCL 5e <sup>1</sup>
Fonts	80 PCL fonts
Print Resolutions	1200 x 600 dpi 600 x 600 dpi
Interfaces	IEEE 802.11 b/g/n Wireless LAN (Ad Hoc & Infrastructure modes) 10/100Base-TX Ethernet USB 2.0 Hi Speed Type B TCP/IP (IPv4, IPv6), IPP
Network Protocols	Windows XP, Vista, 7, 8, Server 2003/R2, Server 2008/R2, Server 2012
Network/OS Support	Citrix Presentation Server 4.0, 4.5, Citrix XenApp 5.0, 6.0

Utilities	Web Image Monitor  @Remote <sup>2</sup> (limited support, requires optional @Remote Office Appliance) Collate, Dithering, Duplex, Do Not Print Blank Pages, Front Cover, Layout/N-up, Reduce/Enlarge, Rotate Print, Toner Saving, Watermarks
-----------	--

<sup>1</sup>PCL 5e does not ship with the product, but the controller can receive PCL 5e data from the host PC.  
<sup>2</sup>Counter information only.

### Copier Specifications

Multi-Copy Speed	Single-page document via ADF or platen: 30 copies-per-minute Multi-page document via ADF: 13 copies-per-minute
First Copy Speed	13 seconds or less
Maximum Original Size	Platen: Up to 8.5" x 11.7"/A4 (210 x 297 mm) ADF: Up to 8.5" x 14" (216 x 356 mm)
Original Type	Platen: Sheets/Books/3D objects/Wallet-size ID Cards ADF: Sheets
Copier Resolution	Scanning: 600 x 600 dpi via Platen 600 x 300 dpi via ADF Printing: 600 x 600 dpi
Grayscale	256 levels
Quantity Indicator	1 – 99
Zoom Range	25 – 400% in 1% increments via ADF or platen
Preset Reduction Ratios	50%, 65%, 78%, 93%
Preset Enlargement Ratios	129%, 155%, 200%, 400%
Copier Features	Combine Copy (2 in 1, 4 in 1), Electronic Sort, ID Card Copy, Image Density (5 levels), Image Quality Mode (Text/Photo/Mixed), Manual Duplex, Photo Mode

### Scanner Specifications

Scanning Device	Full-color CCD array Contact Image Sensor (CIS)
Scanning Capabilities	TWAIN/WIA Scanning Scan-to-Email (1 recipient per TX) Scan-to-Folder (1 destination per TX) Scan-to-FTP (1 destination per TX)
Optical Resolution	1200 x 1200 dpi
TWAIN/WIA Scan Resolution	Platen: 75/100/150/200/300/400/500/600/1200/2400/4800/9600/19200 dpi ADF: 75/100/150/200/300/400/500/600 dpi
Scan-to Resolutions	100/150/200/300/400/600 dpi
Grayscale	256 levels
Scan Modes/Speeds	Black & White: Less than 3 sec./page @ 300 dpi Less than 9 sec./page @ 600 dpi Color: Less than 7 sec./page @ 300 dpi Less than 25 sec./page @ 600 dpi
Scanner Interface	USB 2.0 10/100Base-TX IEEE 802.11 b/g/n Wireless LAN
Address Book Capacity	Up to 100 Scan destinations including 8 Quick Dial entries

Supported File Formats	TIFF, JPEG, PDF
Software Utilities	TWAIN Scanner Driver WIA Scanner Driver

### Facsimile Specifications

Circuit	PSTN/PBX
Compatibility	ITU-T G3, Super G3 Transceiver
Maximum Number of Lines	1
Modem Speed	33.6 Kbps with Auto fallback to 2,400 bps
Transmission Speed	Approx. 3 seconds/page*
Resolution	Standard: 200 x 100 dpi (8 x 3.85 lines/mm) Detail: 200 x 200 dpi (8 x 7.7 lines/mm)
Maximum Scan Width	8.5"
Maximum Scan Length	Platen: 11.7" (297 mm) ADF: 14" (356 mm)
Compression	MH, MR, MMR
Scanning Speed	Less than 5 seconds/page (@ 200 dpi)
Dialing Modes	Direct Fax Number Entry 8 Quick Dials 200 Speed Dials 100 pages
SAF Memory	Up to 200 Fax destinations
Address Book Capacity	Outbound TX only
LAN Fax	LAN Fax Driver with 1,000-entry LAN Fax Address Book
Software Utilities	Auto Answer, Auto Redial, Auto/Manual/Substitute Reception, Book Fax, Broadcasting (100 stations), Contrast Control, Error Correction Mode, Image Reduction, Immediate/Memory Transmission, Monitor Speaker, On Hook Dial, Page Retransmission, Pulse/Tone Selection, Smoothing, Telephone Answering Machine Interface, Time Indicator

Fax Features	Auto Answer, Auto Redial, Auto/Manual/Substitute Reception, Book Fax, Broadcasting (100 stations), Contrast Control, Error Correction Mode, Image Reduction, Immediate/Memory Transmission, Monitor Speaker, On Hook Dial, Page Retransmission, Pulse/Tone Selection, Smoothing, Telephone Answering Machine Interface, Time Indicator
--------------	--

\*ITU No.1 chart, Compression: MMR, Resolution: Standard speed: 33.6 Kbps.

### Consumables & Yields

All-In-One Print Cartridge SP 311HS	3,500 pages	Part #: 407245
-------------------------------------	-------------	----------------

\*Declared yield values based on ISO/IEC 19752. Actual yields may vary based on types of images printed and other factors.

The Ricoh SP 311SFNw ships with a starter All-In-One print cartridge yielding approximately 1,000 pages. All other consumables ship at full yield.

Specifications subject to change without notice.

### Warranty

The Ricoh SP 311SFNw B&W Multifunction Laser Printer, when delivered in new condition in the original packaging, is entitled to one year free technical telephone support and is warranted against defects in materials and workmanship for a period of ONE (1) YEAR from the date of original purchase. The All-In-One (AIO) Toner Cartridge that is sold with the printer is also warranted with Advance Exchange Warranty Service, for a period of 90 DAYS from the date of original purchase or until depletion of the toner, whichever comes first.

**RICOH**  
imagine. change.

[www.ricoh-usa.com](http://www.ricoh-usa.com)

Ricoh Americas Corporation, 70 Valley Stream Parkway, Malvern, PA 19355, 1-800-63-RICOH  
Ricoh® and the Ricoh Logo are registered trademarks of Ricoh Company, Ltd. All other trademarks are the property of their respective owners. ©2013 Ricoh Americas Corporation. All rights reserved. The content of this document, and the appearance, features and specifications of Ricoh products and services are subject to change from time to time without notice. Products are shown with optional features. While care has been taken to ensure the accuracy of this information, Ricoh makes no representation or warranties about the accuracy, completeness or adequacy of the information contained herein, and shall not be liable for any errors or omissions in these materials. Actual results will vary depending upon use of the products and services, and the conditions and factors affecting performance. The only warranties for Ricoh products and services are as set forth in the express warranty statements accompanying them.

R3456-2



Tel (502) 2360.1140  
[www.artesgraficasca.com](http://www.artesgraficasca.com)

